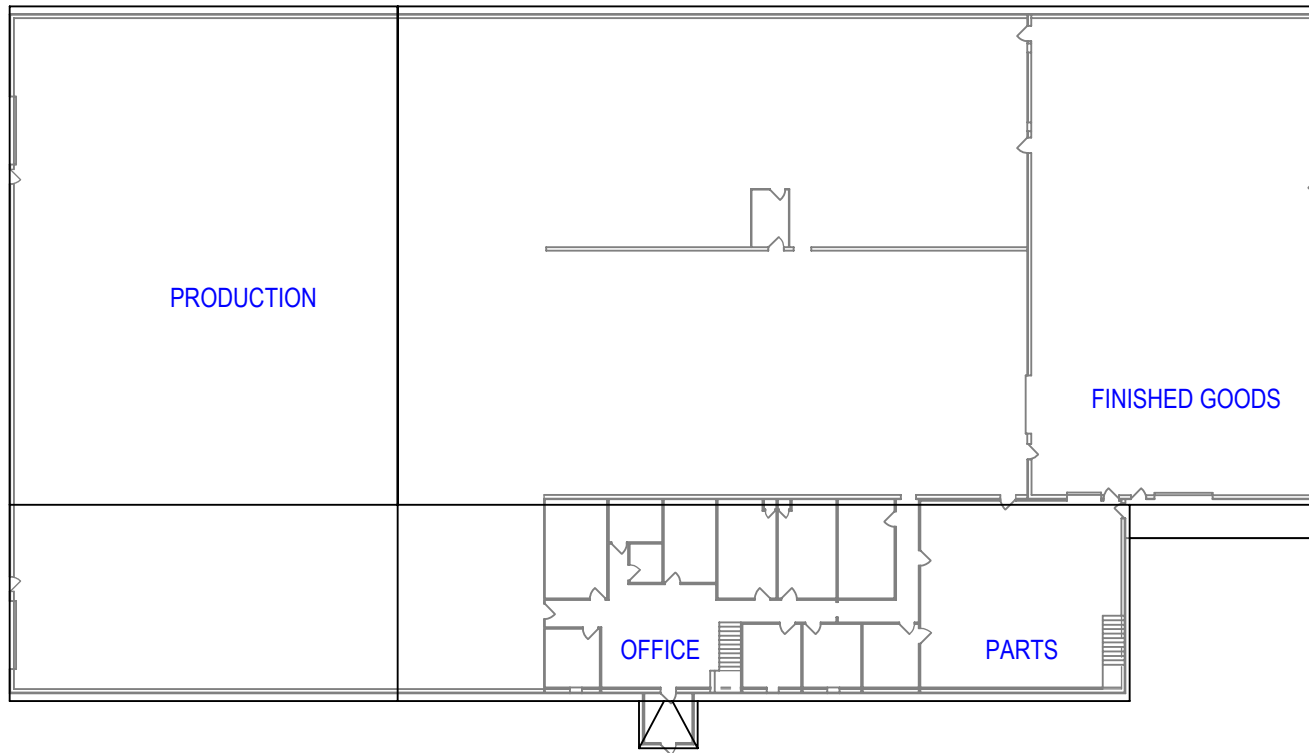
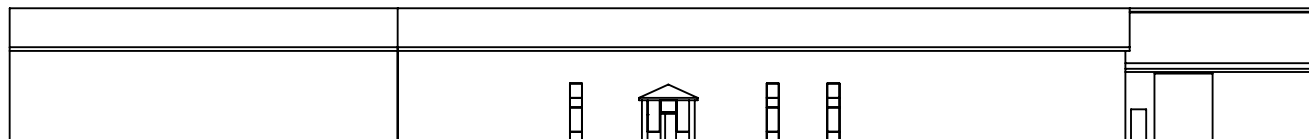


REVISIONS			
REV.	DESCRIPTION	DATE	APPROVED
A	INITIAL RELEASE	1/13/2016	



NOTES:
 Existing Building: 190' x 140'
 Addition: 80' x 140'
 Total: 270' x 140'



PROPRIETARY AND CONFIDENTIAL
 THE INFORMATION CONTAINED IN THIS
 DRAWING IS THE SOLE PROPERTY OF TRIPLE
 C INC. ANY REPRODUCTION IN PART OR
 AS A WHOLE WITHOUT THE WRITTEN
 PERMISSION OF TRIPLE C, INC IS PROHIBITED.

UNLESS OTHERWISE SPECIFIED:
 DIMENSIONS ARE IN INCHES
 TOLERANCES:
 FRACTIONAL $\pm 1/16$
 ANGULAR: MACH ± 1 BEND \pm
 TWO PLACE DECIMAL ± 010
 THREE PLACE DECIMAL ± 005

MATERIAL
 DO NOT SCALE DRAWING

	NAME	DATE
D: DRAWN	CAITLYN	1/13/2016
PART #	TRIPLE C WITH 2015 ADDITION	
ASM #		
COMMENTS:		
TRIPLE C BUILDING WITH 2015 ADDITION		

P.O. BOX 248, SABETHA, KS 66534
 (785) 284-3674 FAX (785) 284-3931

TRIPLE C
 INC

SIZE	DWG. NO.	REV
A	95-1408	A
SCALE: 1:475	WEIGHT:	SHEET 1 OF 1